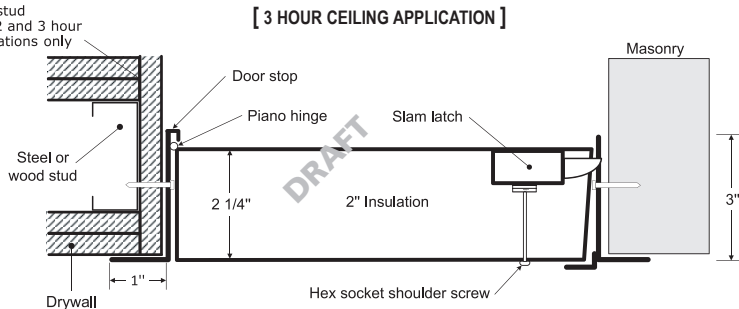
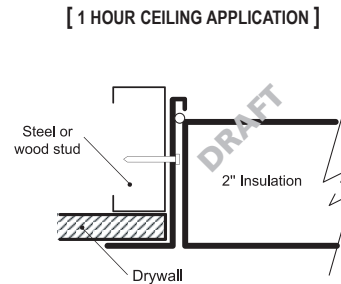


**FIRE RATED INSULATED UPWARD OPENING ACCESS DOOR
FOR CEILINGS ONLY**
PFU
INSTALLATION: CEILINGS ONLY

Wrapping of stud required for 2 and 3 hour ceiling applications only

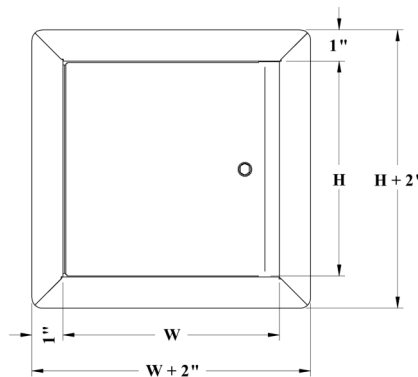

[3 HOUR CEILING APPLICATION]

[1 HOUR CEILING APPLICATION]

Authorities Having Jurisdiction (AHJ) should be consulted in all cases as to the particular requirements covering the installation and use of fire rated access doors.

DIMENSIONS AND APPEARANCE
LEED ready: This product contributes to LEED® credits.

DOOR SIZE W x H inches (MM)	NUMBER OF LOCKS	WEIGHT LBS KG	
22 x 30 (558 x 762)	1	30	30.6
22 x 36 (558 x 914)	2	37	16.8
24 x 24 (609 x 609)	1	29	13.2
(Clear opening with door opened = W - 3 1/2")			
Rough wall opening is door size + 1/4" or + 6mm			

**Your odd sizes:
Made in 5 days**


DESCRIPTION AND MATERIAL SPECIFICATION
CENDREX PARTNERS
FIRE RATING: For horizontal ceiling assemblies only:

CERTIFIED TO STANDARDS: ASTM E119 (2012), CAN/ULC S101 (2007).

 RATING ACHIEVED: 3 hours in non-combustible construction.
1 hour in combustible construction.

 MAXIMUM SIZE: 24" x 36" (hinges & latch on 36" long sides)
(610 mm x 914 mm).

 Tolerances on dimension limitations are $\pm 3"$ (76 mm)
as long as the area does not exceed 864 in².

TEMPERATURE RISE: Not applicable.

- Material:** 16 gauge cold rolled steel frame and 20 gauge galvanized steel door
- Insulation:** 2" thick mineral wool
- Hinge:** continuous piano hinge allows opening to 89°
- Lock / latch:** self latching ring operated slam latch inside and a hex head slam latch outside
- Finish:** high quality white powder coat primer
- Packaging:** individually wrapped, 1 per box

POPULAR OPTIONS For complete list of options go to: www.cendrex.com
Material: stainless steel #4 (brushed finish)

PROJECT DATA

PROJECT NAME:	QTY	W	H	OPTIONS
ARCHITECT:				
DEALER:				
CONTRACTOR:				
LOCATION:	SPECIAL INSTRUCTIONS:			
DATE:				
TAGGING INSTRUCTIONS:	SUBMITTAL APPROVAL: (signature or stamp)			

HEAD OFFICE: 11 303, 26th avenue, Montreal, Quebec, Canada H1E 6N6

WAREHOUSES: California, Colorado, Florida, Illinois, Pennsylvania, Texas

Tel.: 514 493-1489 - 1 800 479-1489

Fax: 514 493-1992 - 1 800 297-1489

www.cendrex.com
info@cendrex.com